

New
 upgraded to suit
 4" round & 4" square posts



4" Round Post Holder:

Now comes as the standard fitted post holder. Available as an optional extra for older POST DRIVER machines.

Part No. 075/02

Part No. 075/01

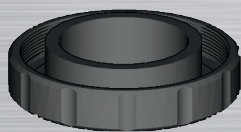
Optional Square Post Holder:

An additional post holder is available which can be fitted to the machine as an alternative to the standard post holder. This can be used for square and rectangular posts.

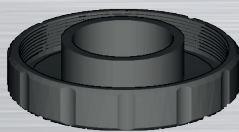
3" x 3"
 4" x 3"
 4" x 4"



70mm - 100mm
 (2³/₄" - 4")



50mm - 69mm
 (2" - 2³/₄"")



20mm - 49mm
 (3/4" - 2")

SUPPLIED WITH POST DRIVER UNIT



POST DRIVER

Due to popular demand, the Portek POST DRIVER has now been updated to fit almost all post types up to 4".



Portek Ltd. Bryn Hall, Knolton Bryn
 Overton-on-Dee, Wrexham, LL13 0LF
 Tel: 01234 889454 | Fax: 01234 889464
 Web: portek.co.uk | Email: info@portek.co.uk